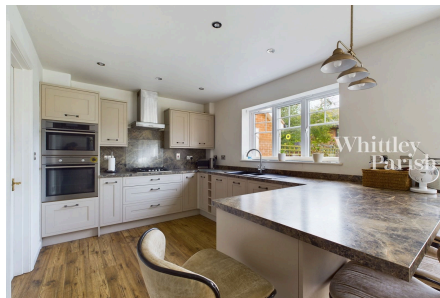
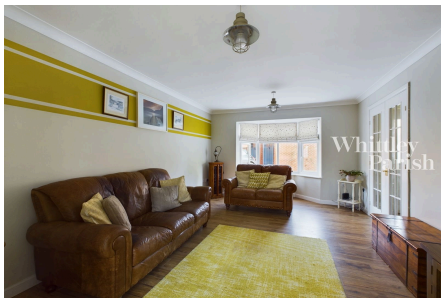


Ashton Road, Eye

Guide Price £450,000 - £475,000

4 3 2



No onward chain. Substantial four bedroom detached house with double garage located within close proximity to the town centre.

Key Features

- Guide Price £450,000 - £475,000
- No onward chain
- 4 double bedrooms
- 2 en-suite bathrooms
- Double garage
- Accommodation in region of 1,700 sq ft
- Close to town centre
- Council Tax Band D
- Freehold - EPC Rating C
- Gas heating - Mains drainage

